

# INDIA, AB SOCH KARO BULAND

JK LAKSHMI  
**PRO+**  
CEMENT

PORTLAND SLAG CEMENT



## Boundless Ideas Meet Seamless Technology

It takes ideas for creation to materialise. Today, with the entire world looking towards India, we need ideas that are inherently boundless and technology that is truly seamless.

That is why, to ensure that such ideas come to life, we have created a truly advanced cement according to India's diverse conditions and its new age construction needs.

Presenting the all new JK Lakshmi PRO+ Portland Slag Cement with 7+ benefits. Because it's time to realize even the most distant of our dreams.



### PLUS DURABILITY

Technologically Advanced Product using Micro Particle strength (MPS) technology leading to lower permeability of concrete which ensures higher durability of construction.



### PLUS FINISH

Finer cement particles lead to better smoothness and superior finish



### PLUS SURETY

Advanced packers give correct quantity & factory fresh quality of cement



### PLUS SPEED

Early de-shuttering saves time and ensures a speedy construction process



### PLUS SERVICE

Timely delivery and an expert technical team for on-site guidance



### PLUS STRENGTH

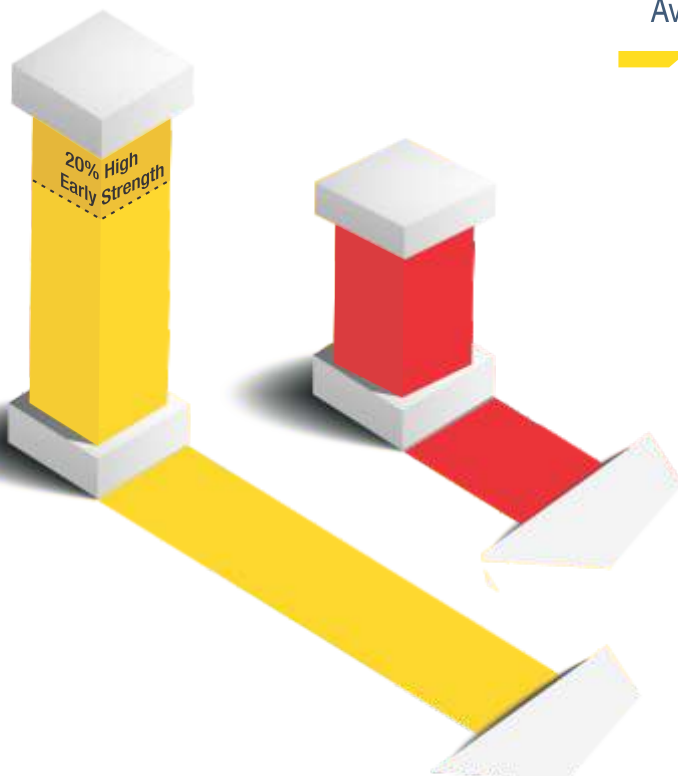
With 20% higher early strength and superior 28 days strength, JK Lakshmi PRO+ Cement offers plus Mazbooti



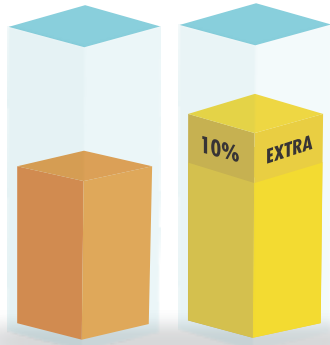
### PLUS ECONOMY

With 5% more volume per bag of cement, it requires lesser number of bags for construction

## Average 24 Hr. Strength (MPa) of PSC



- 16±1 JK Lakshmi PRO+ Portland Slag Cement (20% High Early Strength)
- 13±1 Ordinary Cement



## Average Surface Area (m<sup>2</sup>/Kg) of PSC

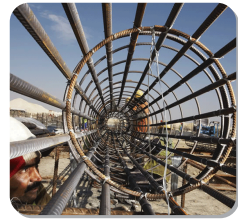
- 380±10 JK Lakshmi PRO+ Portland Slag Cement (10% Extra)
- 340±20 Ordinary Cement

## Applicable Standards

JK Lakshmi PRO+ Portland Slag Cement conforms to IS : 455 with its latest amendments.

## Basic Applications

JK Lakshmi Pro+ Portland Slag Cement is best suited for high strength, high performance concrete work, mass concreting and underground structures. The light colour plaster made of slag cement results in savings due to less paint consumption. Its many applications are:



**Masonry, Plaster Products  
For A Multitude of  
Construction Projects**

**Bungalows**

**High performance concrete-  
Skyscrapers**

**Residential & Commercial  
Driveways**

**Piling**



**Bridges**

**Dams**

**Water Retaining Structures  
And Treatment Facilities**

**Precast Industry**

**Underground Structures**

## Water & Curing

For mixing and curing concrete, only potable water is ideal. Curing is a vital process for full potential strength and long term durability of concrete. Efficient water curing should be commenced as soon as concrete starts hardening i.e. no nail/thumb impression on freshly laid concrete. It should be continued for 7-10 days. Exposed Concrete surfaces should be protected from excessive drying by use of windbreaks and application of effective curing measures.



**JK LAKSHMI**  
C E M E N T



**JK LAKSHMI**  
**PRO+**  
CEMENT

**JK LAKSHMI**  
**Power Mix**  
READY MIX CONCRETE

**JK LAKSHMI PLAST**  
PLASTER OF PARIS

**JK SMARTBLOX**  
Autoclaved Aerated Concrete

Website: [www.jklakshmicement.com](http://www.jklakshmicement.com)



[facebook.com/JKLakshmiCementLtd](https://facebook.com/JKLakshmiCementLtd)



[twitter.com/JKLCofficial](https://twitter.com/JKLCofficial)